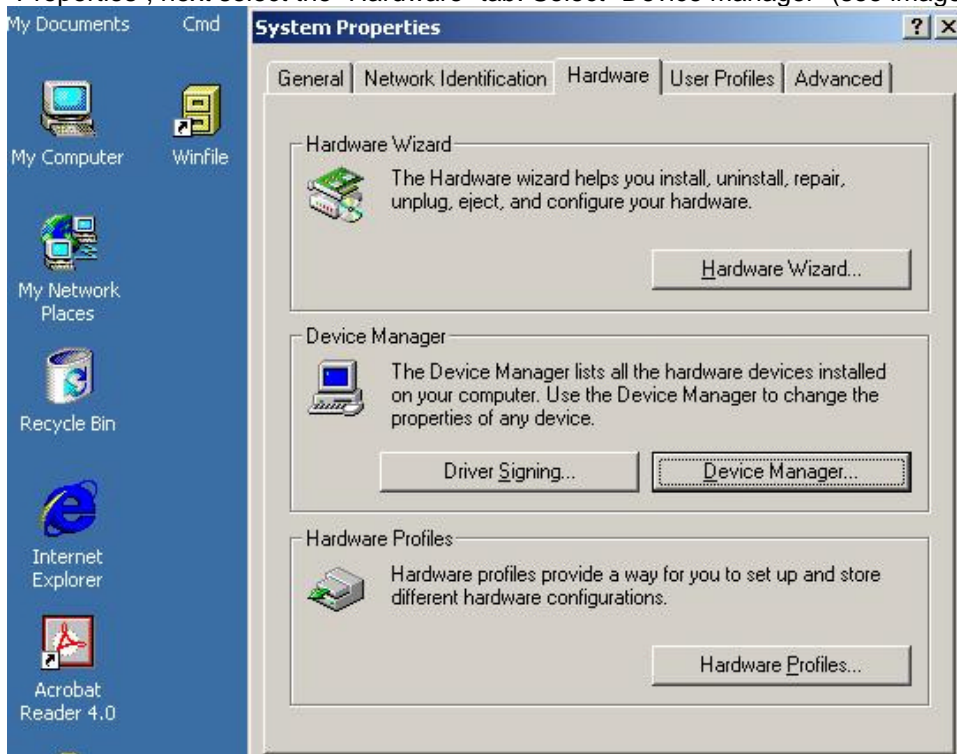


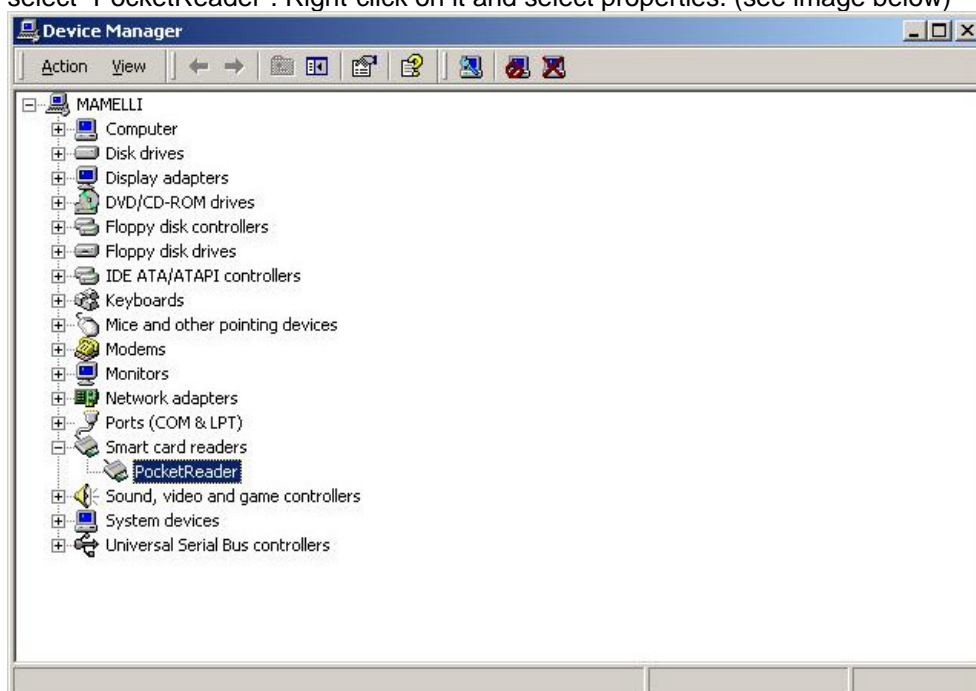
Eutron Pocket-Reader release upgrade procedure for W2K:

Please follow the steps described below to upgrade the Pocket-Reader release version. This example shows how to upgrade from Pocket-reader rel. 3.7.1.1 to rel. 3.7.2.1 on W2K platform. The same philosophy must be followed when upgrading on others operating system like Windows 98, Windows Millennium Edition (ME) and Windows XP (but in this cases the steps described can be slightly different, so be careful to understand the procedure)

With Pocket-Reader inserted in the USB port, right-click on "My Computer" and select "Properties", next select the "Hardware" tab. Select "Device manager" (see image below)



When opens the "Device manager", open the "Smart card readers" section and select "PocketReader". Right-click on it and select properties. (see image below)



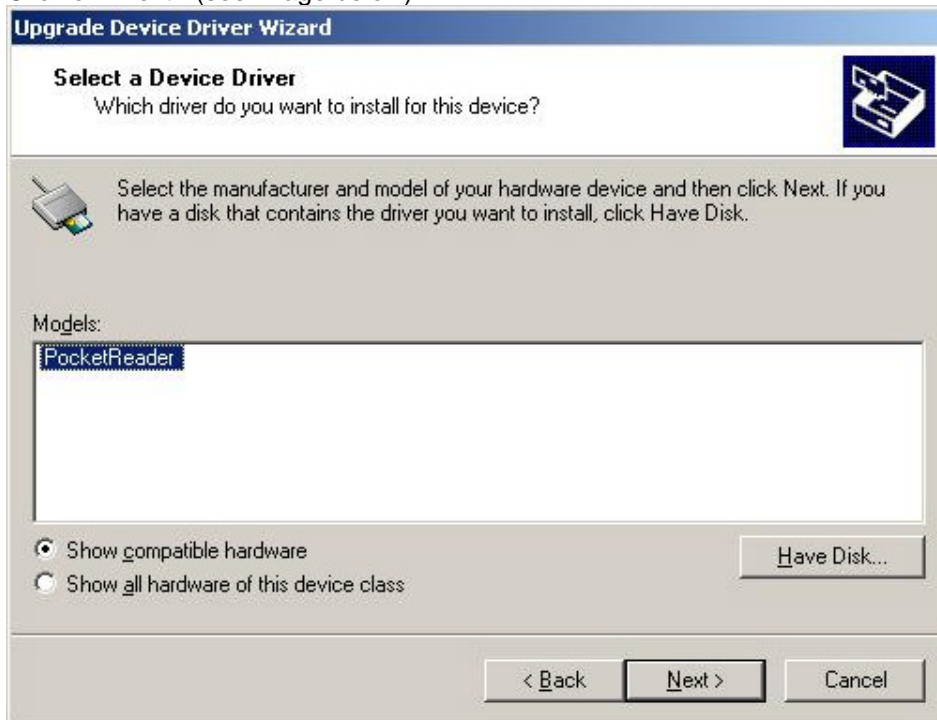
When opens the “PocketReader Properties”, select the “Driver” tab and click on “Update drivers”. (see image below)



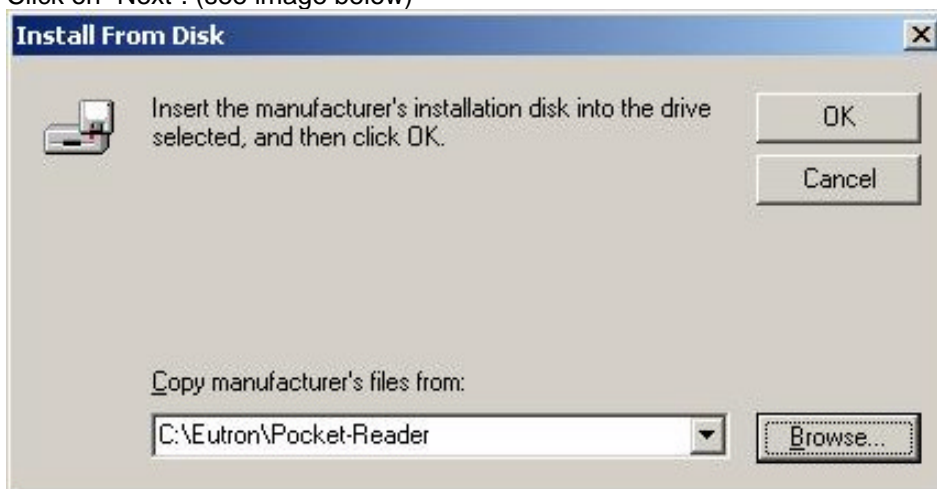
When opens the “Upgrade device Driver Wizard”, do not select the default option (recommended) , but select “Display a list of the known drivers for this device do that i can choose a specific driver“. Click on “Next”. (see image below)



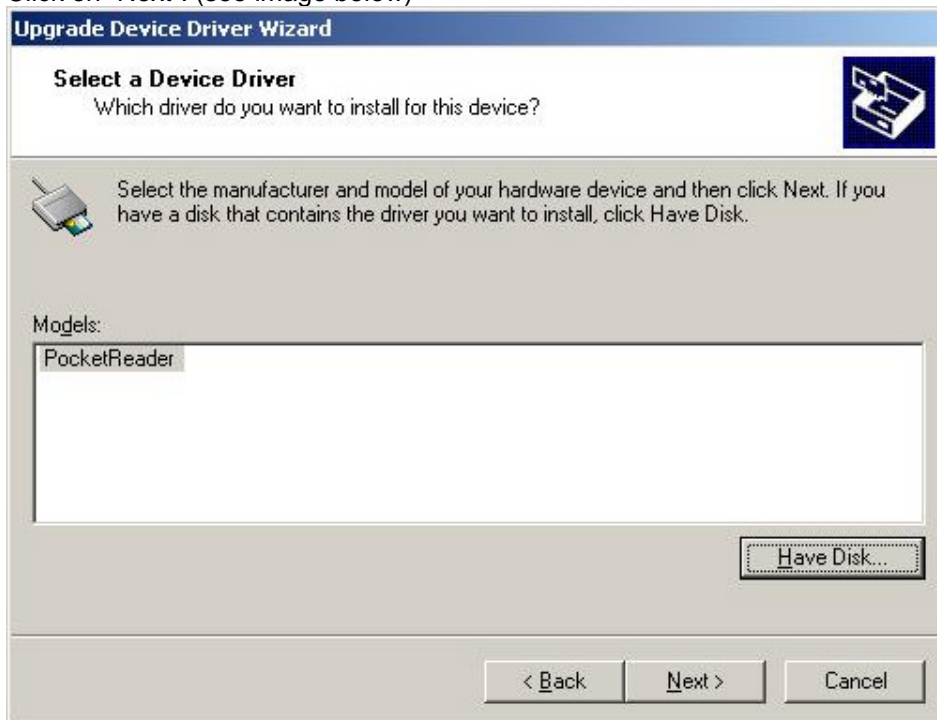
When opens the new “Upgrade device Driver Wizard”, select “Have disk”.
Click on “Next”. (see image below)



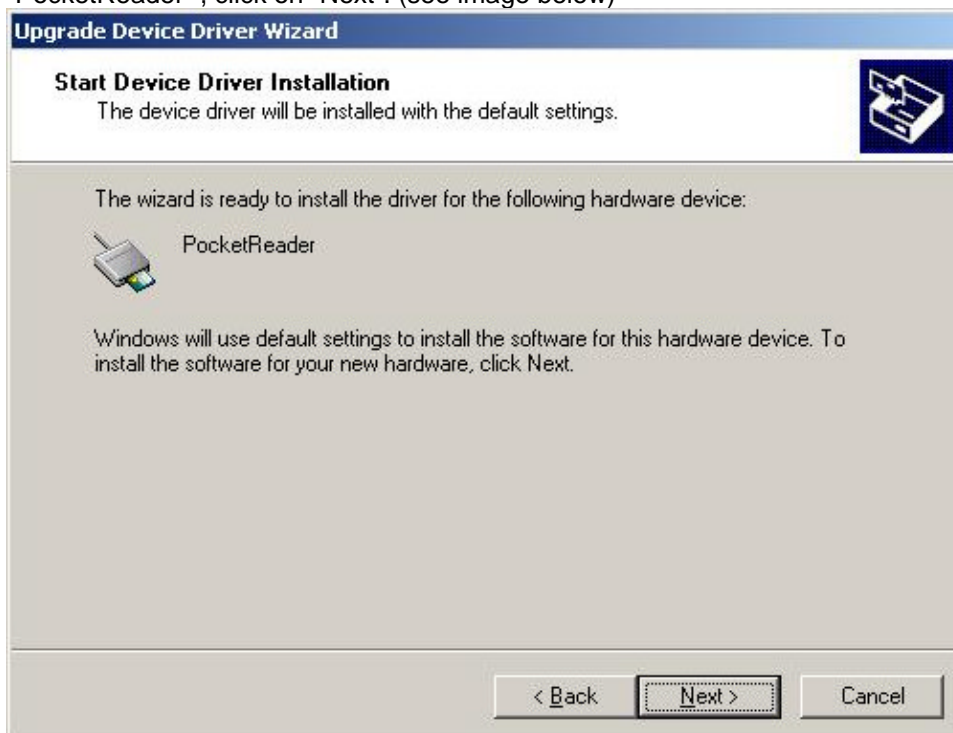
When opens the “Install From Disk” panel, specify the folder where you have unpacked the driver files. If unpacked on a floppy disk specify “A:\
Click on “Next”. (see image below)



Then will be opened again the “Upgrade device Driver Wizard” panel.
Click on “Next”. (see image below)



When opens again “Upgrade device Driver Wizard” showing you the model
“PocketReader” , click on “Next”. (see image below)



You will be warned by a "Digital Signature Not Found" alert panel. Continue safely the installation clicking on "Yes". (see image below)



Complete the upgrade process clicking on "Finish" when will open the last "Upgrade device Driver Wizard" panel. (see image below)



You can verify the correct driver release upgrade process checking the driver version (should be changed from 3.7.1.1 to 3.7.2.1).
Complete the upgrade process clicking on "Close".
Close also the remaining panels open. (see image below)

